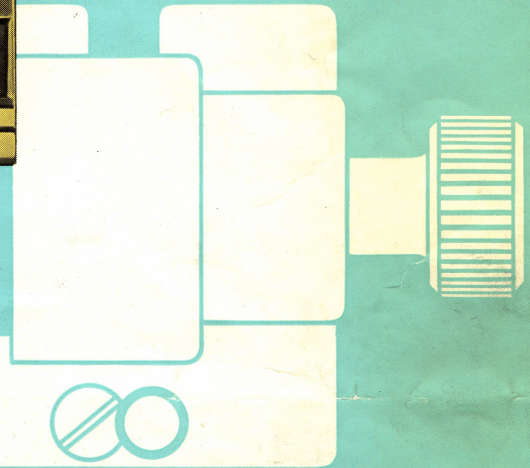




NEBITY PE



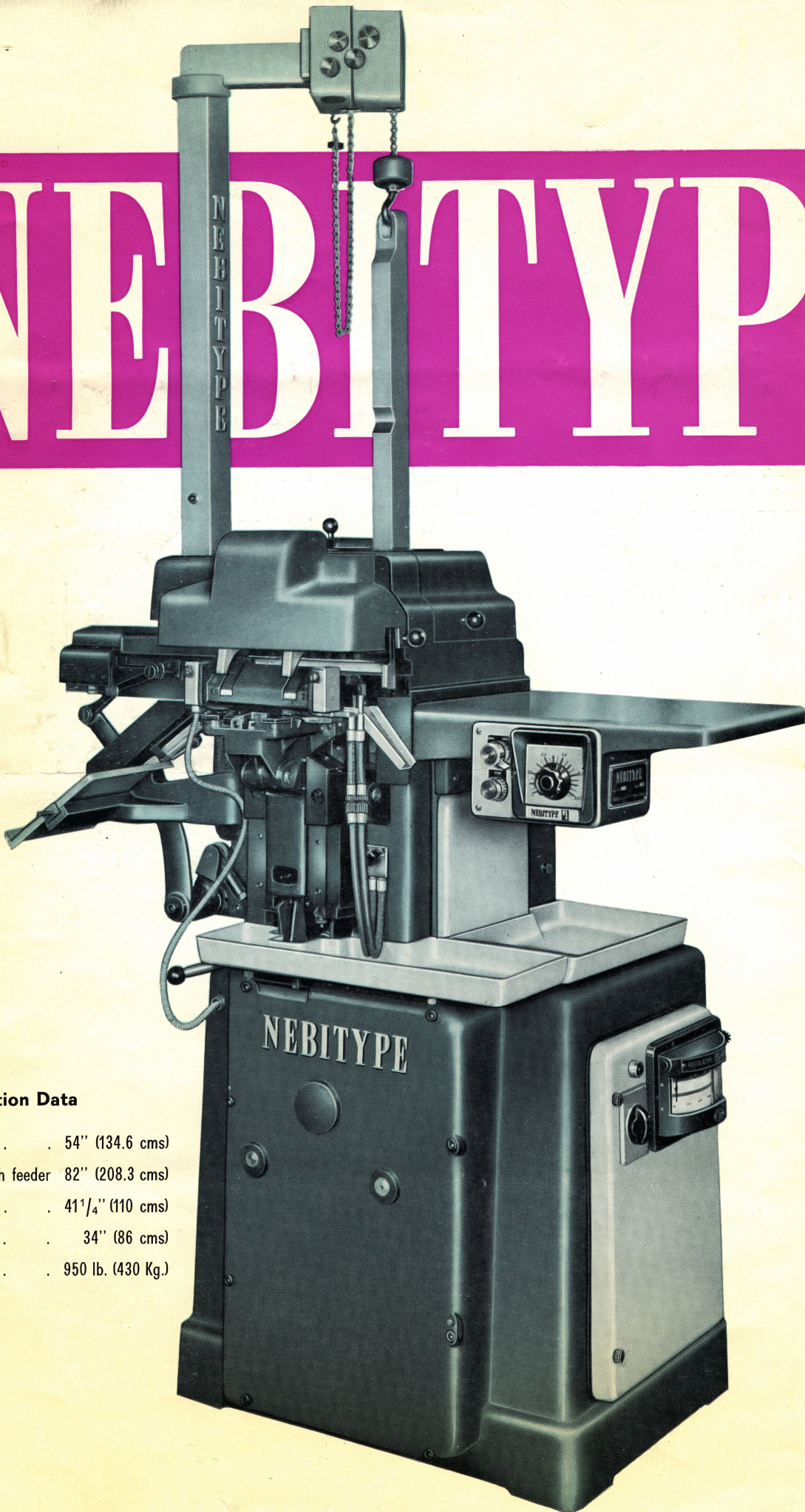
NEBITY PE

NEBITY PE



Line casting Machine
using hand-composed
matrices on 42 em
(40 cicero) slugs,
6-72 pt.

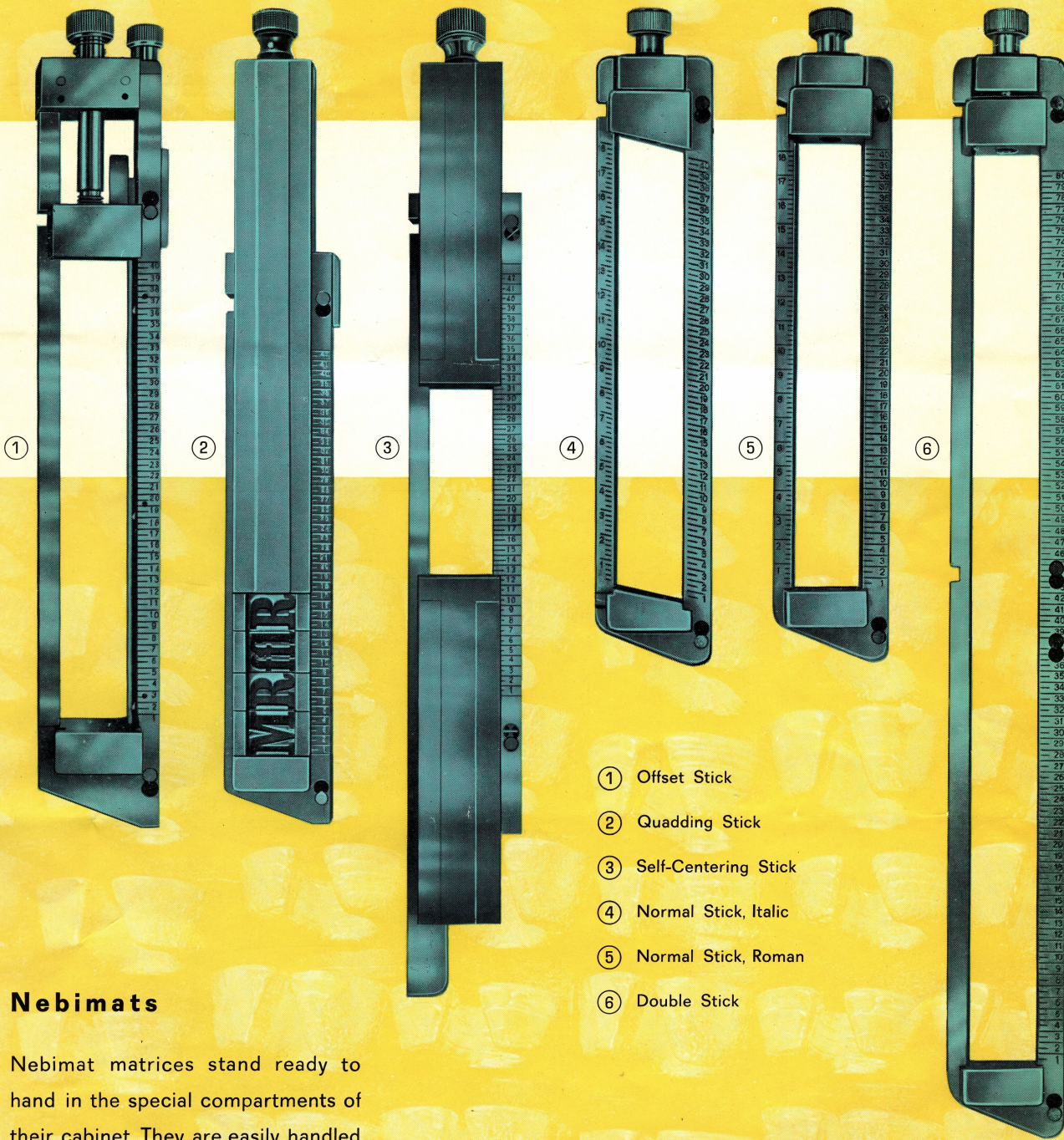
NEBITYPE



Installation Data

| | | |
|--------------------|-------|--|
| Height | . . . | 54" (134.6 cms) |
| Height with feeder | . . . | 82" (208.3 cms) |
| Length | . . . | 41 ¹ / ₄ " (110 cms) |
| Depth | . . . | 34" (86 cms) |
| Weight | . . . | 950 lb. (430 Kg.) |



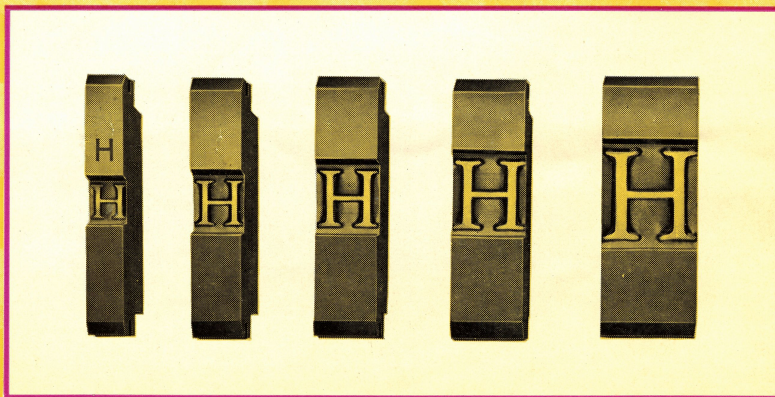


- ① Offset Stick
- ② Quadding Stick
- ③ Self-Centering Stick
- ④ Normal Stick, Italic
- ⑤ Normal Stick, Roman
- ⑥ Double Stick

Nebimats

Nebimat matrices stand ready to hand in the special compartments of their cabinet. They are easily handled and assembled in the composing stick more rapidly than a compositor sets single type.

They are manufactured to very close tolerances and are rigorously inspected to ensure correct alignment and depth of drive. Consequently, Nebimats produce sharp type faces, and this quality is maintained after countless castings.



NEW TYPE FOR EVERY JOB - THANKS TO NEBIMATS

1

The Display Type Casting Machine with greater capacity, saving time and money

9-SECOND CASTING CYCLE

ATTACHMENTS AND SPECIAL COMPOSING STICKS ENABLE USE OF MATRICES MADE FOR OTHER LINE-CASTERS.

PRACTICAL SELECTION OF NEBIMATS AVAILABLE.

NEW TYPE EVERY TIME.

WEAR (AND REPLACEMENT COSTS) OF FOUNDRY TYPE ELIMINATED.

2

In Service

Nebitype Machines, simple in design and straightforward in operation, present no problems to a compositor - production can start without special training.

Robust construction promises many years of dependable, trouble-free working with a minimum of maintenance.

The product is a 42-em slug having ample mechanical strength and presenting a clean-cut face; any standard type metal suitable for composition work can be used. Output is considerably more rapid than that of any other line-caster employing hand-setting.

3

How Nebitype Works

Matrices are assembled by hand in the composing stick which is then placed in the machine. Pressing a starter button sets in motion the following casting cycle: an elevator takes charge of the matrices and mould, clamping them against the mouthpiece through which metal is injected horizontally to give high-density slugs and complete filling of the character-drives. Should the lock-up be insecure for any reason, a safety device prevents casting and thereby obviates metal squirt.

After the line is cast, the mould and matrices are released, a moving slide cleans the mouthpiece and trims the bottom of the slug; the latter is then ejected from the mould and delivered to the galley.

4

Nebitype Features

Easy access to working parts.

Centralized lubricating system.

Readily replaceable electric heating elements.

Stationary pot with micrometer adjustment for mouthpiece.

Safety devices to prevent metal splash.

Spring-loaded safety clutch.

Self-contained water-cooling system for mould.

Pot and mouthpiece temperatures automatically controlled.

Electrically operated metal feed.

Repeat casting of blank or type lines.

Nebimat Cabinets are Efficiency Equipment

Enamelled steel, of sturdy construction, with random top.

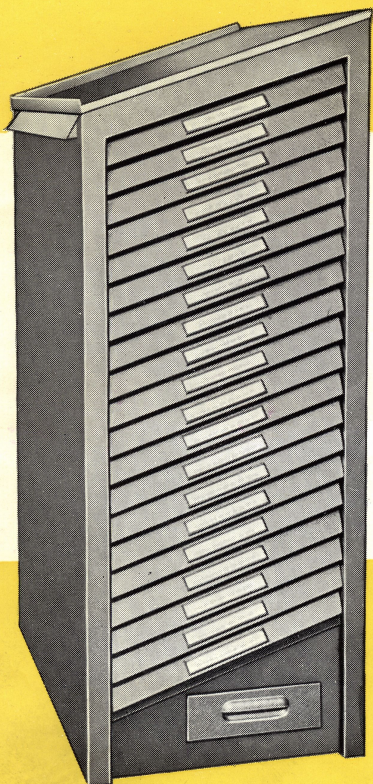
Drawers run on ball-bearings.

Removable matrix trays.

20 matrix drawers and 1 large tool drawer.

Drawers on right, left or both sides.

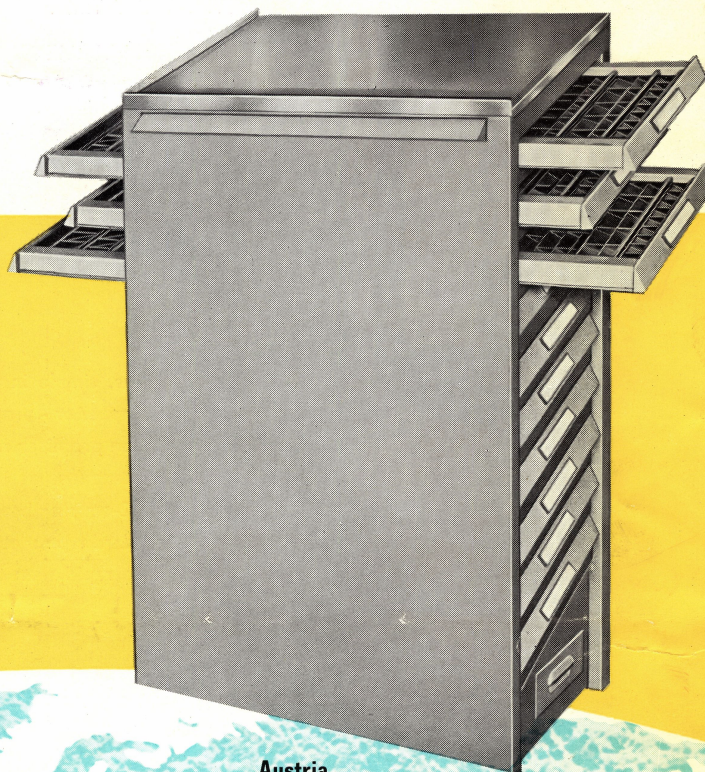
Handles embody windows for four-name labels.



Height: 53" (135 cms)

Width : 20" (50 cms)

Depth : 32" (81 cms)



SOCIETÀ NEBITYPE



TORINO VIA BOLOGNA, 47
PHONES 21.846 - 22.261 - 22.267

NEBITYPE gives quicker production than any comparable machine.

NEBITYPE is the new versatile line-caster for all composing rooms - from the largest to the smallest.

