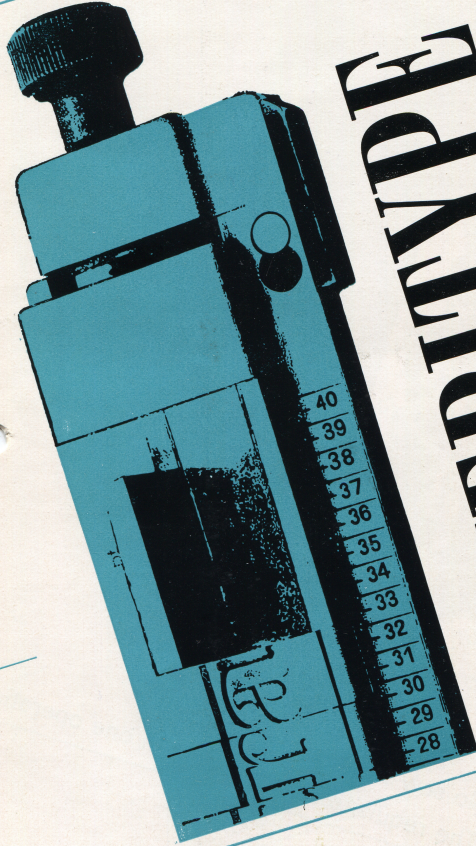


Canadian Linotype Company

431 BERRY ST., WINNIPEG 12, MAN.
Phone Turner 8-7953

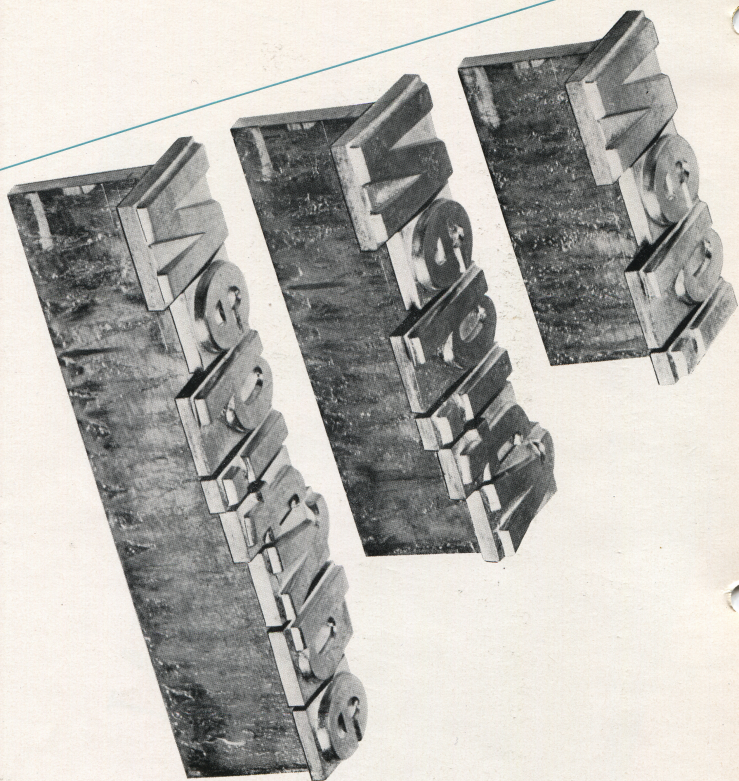
TORONTO - VANCOUVER - CALGARY - EDMONTON
LONDON - OTTAWA - MONTREAL - HALIFAX

LINOTYPE



NEBTYPE

NEBTYPE S.p.A.
Via Bologna 47
Torino (Italy)

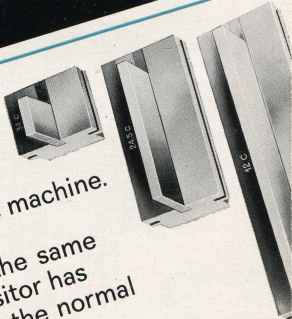


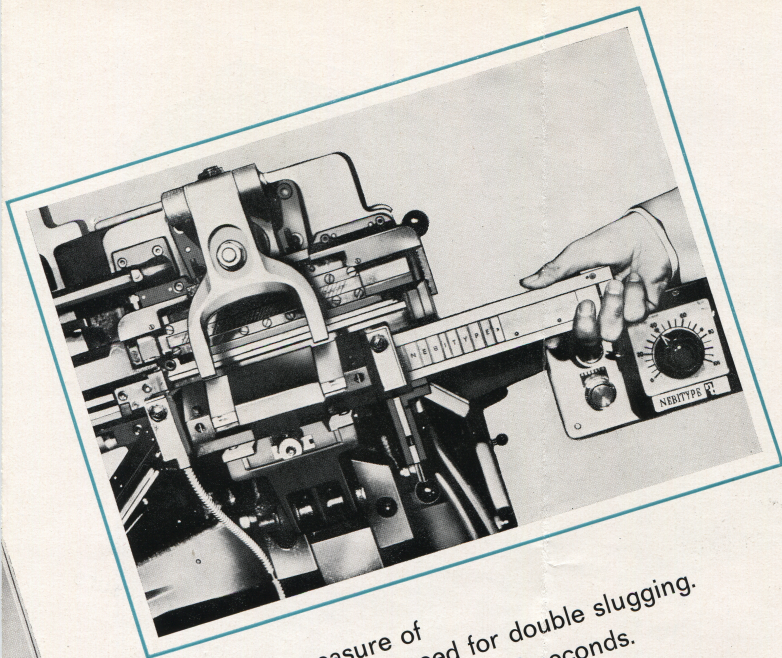
No saw trimmer required.
The requisite length is cast in one operation.



Nebitype system for variable lengths

Any required length up to 42 ems is instantly obtained, without altering the machine. Two or more compositors can work successively on the same machine. When the compositor has set and justified his line in the normal way, instead of spacing out to the maximum length of stick, he simply inserts a lightweight aluminium block, which seals off the portion of the mould not required in casting.





Extra-wide measure of
42 ems reduces the need for double slugging.

84 ems of 72 pt. are cast in 18 seconds.

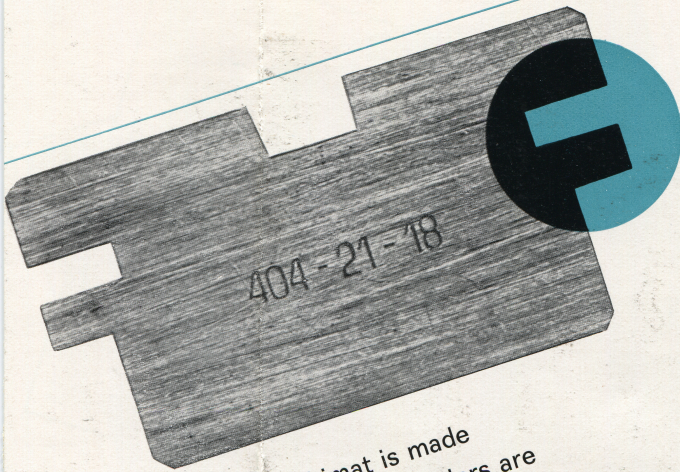
A 42 em slug is cast in 9 seconds.

Metal is injected horizontally to give
high-density slugs and complete filling of
the character-drives.

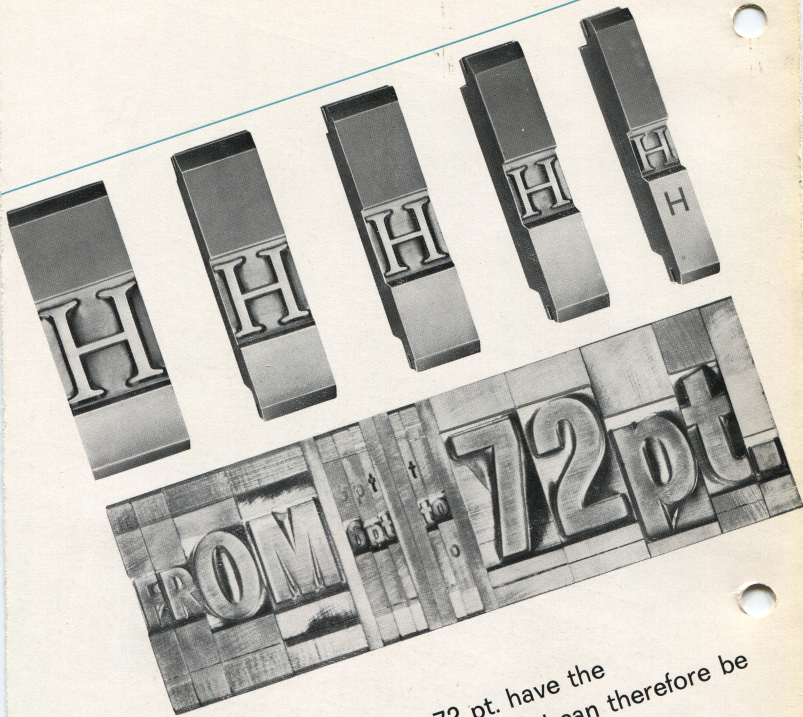
Stationary pot with micrometer adjustment
for mouthpiece.

It takes one minute to change moulds.

Electrically operated metal feeder.



This is how a Nebimat is made
Its strong, extra-wide shoulders are
resistant to strain and
ensure long life in a perfect condition.
Nebimats are manufactured to very close
tolerances and are rigorously inspected to ensure
correct alignment and depth of drive.
42 em horizontal rule matrices are
available in several weights. They can be used for
broaching on the Universal Mono-Tabular
Broach for rule-form work. Nebitype
rules are also available in 10 $\frac{1}{2}$ ems and 21 ems.
Nebimats produce sharp type faces and
this quality is maintained after countless castings
Extensive range of Nebimats available.



Nebimats from 6 to 72 pt. have the same shoulder dimension and can therefore be set in the same stick using the one spacing assortment.

Nebimats are assembled engraved side up, so that a line can be immediately read.